

Returning to School September 2020 Plans and Advice for Parents

Following the recent guidance, we wanted to write to you to update you on our plans for a safe return to school for your children and our staff in September.

We are pleased to announce that the school will reopen to all pupils on Wednesday 9th September. Due to current guidelines in place, the school will of course run slightly differently to what the pupils are used to, ensuring all safety measures are in place to protect pupils and staff.

Despite the changes we are having to make, we are determined to ensure the children return to a positive and caring environment where the needs of all our pupils are met. Over the past few weeks, the school has worked hard to develop a recovery curriculum that will ensure our pupils feel safe and settled as we ease them back into school life. The information shared follows the current guidance in place and may be subject to change if further advice is given.

Please ensure all slides are read and please contact us on admin@francisaskewprimary.org if you have any further questions.



National Guidance for September can be found [here](#)



Welcome Back

On **Wednesday 9th September** all pupils will be welcomed safely back to school and we cannot wait! New starters in Reception and Nursery will have slightly different start dates – Mrs Leach has contacted you separately about this.

As the children have missed a significant amount of time in school, which may have affected their emotional, social and mental well being, we will be welcoming all children back into an environment that is nurturing and supportive, ensuring all children feel safe and happy to be back with their peers.

Your children will already know who their new teacher is going to be and will have received a little introduction from them saying 'hello' and explaining a little bit about what it will be like in their new classrooms.

Welcome to the new 1E1L!
Hello to my new class for 2020-2021. I have a very exciting year ahead of us. I am really looking forward to the new adventure that awaits us and thought you would like to have a little more about the year ahead of you and the people who will be working with you.

Meet Mrs Hanson
I have worked at Francis Ashurst Primary School for half a year and this will be my first full year here. I am excited about being in year 1!

My Favourites
Reading, Writing, Art, Music, PE, Outdoor Learning, Gardening, and all the children in my class.

My little bunny, Poppy
Poppy is my little bunny and she is my favourite. She is very fluffy and likes to be petted.

About Me
I was born in London, I have 2 children and I have a dog called Poppy. I love to travel and I love to read.

Our Classroom
We have a very lovely room with lots of books and toys. We have a big window and a view of the garden.

See you soon!

Welcome to 2JJ!
Hello to my new class for 2020-2021. I have a very exciting year ahead of us. I am really looking forward to the new adventure that awaits us and thought you would like to have a little more about the year ahead of you and the people who will be working with you.

Meet Mrs Donnelly
Hello! My name is Mrs Donnelly and I will be working in 2JJ alongside Mrs Nicholls and Mrs Doolan. I have been working at Francis Ashurst for 12 years and I feel like my second family here.

Meet Miss Nicholls
Hello! My name is Miss Nicholls and I will be working in 2JJ alongside Mrs Donnelly and Mrs Doolan. I have been working at Francis Ashurst for 12 years and I feel like my second family here.

Our New Classroom
We have a very lovely room with lots of books and toys. We have a big window and a view of the garden.

My Favourites
Reading, Writing, Art, Music, PE, Outdoor Learning, Gardening, and all the children in my class.

Coming up...
We have lots of exciting resources for you and we will be happy to show you around our classroom.

See you soon!

Welcome to the new 3CJ!
Hello to my new class for 2020-2021. I have a very exciting year ahead of us. I am really looking forward to the new adventure that awaits us and thought you would like to have a little more about the year ahead of you and the people who will be working with you.

Mr Steele
I have worked at Francis Ashurst Primary School for half a year and this will be my first full year here. I am excited about being in year 3!

About Me
I was born in London, I have 2 children and I have a dog called Poppy. I love to travel and I love to read.

Mrs Harrison
I have worked at Francis Ashurst Primary School for half a year and this will be my first full year here. I am excited about being in year 3!

Our Autumn Topic
We have lots of exciting resources for you and we will be happy to show you around our classroom.

See you soon!

Welcome to the new 4SS!
Hello to my new class for 2020-2021. I have a very exciting year ahead of us. I am really looking forward to the new adventure that awaits us and thought you would like to have a little more about the year ahead of you and the people who will be working with you.

Meet Mrs Shakespeare
I have worked at Francis Ashurst Primary School for half a year and this will be my first full year here. I am excited about being in year 4!

A Little Bit About Me
I was born in London, I have 2 children and I have a dog called Poppy. I love to travel and I love to read.

My Favourites
Reading, Writing, Art, Music, PE, Outdoor Learning, Gardening, and all the children in my class.

Mrs Murray
I have worked at Francis Ashurst Primary School for half a year and this will be my first full year here. I am excited about being in year 4!

Our Classroom
We have a very lovely room with lots of books and toys. We have a big window and a view of the garden.

Coming up...
We have lots of exciting resources for you and we will be happy to show you around our classroom.

See you soon!

Welcome to the new 5WV!
Hello to my new class for 2020-2021. I have a very exciting year ahead of us. I am really looking forward to the new adventure that awaits us and thought you would like to have a little more about the year ahead of you and the people who will be working with you.

Meet Mr Webb
I have worked at Francis Ashurst Primary School for half a year and this will be my first full year here. I am excited about being in year 5!

Meet Mrs Dymkova
I have worked at Francis Ashurst Primary School for half a year and this will be my first full year here. I am excited about being in year 5!

Our Classroom
We have a very lovely room with lots of books and toys. We have a big window and a view of the garden.

Coming up...
We have lots of exciting resources for you and we will be happy to show you around our classroom.

See you all soon!

Recovery Curriculum

Throughout the Autumn term and onwards if necessary, the school will be running a recovery curriculum to ensure the emotional wellbeing of our pupils is supported. The basics of this curriculum is shared below and further information can be found alongside this document on the school website.

- S** Safety and Security- Establish new routines to be safe and feel safe.
- P** Physical health- Health and hygiene and being active.
- A** Academic Standards- Re-establishing positive learning behaviours and addressing gaps in pupils' learning.
- C** Creativity- Re-establishing ways to work with others-group work/communication.
- E** Emotional wellbeing- Rebuilding positive relationships with adults/peers and managing feelings and behaviours.

Classroom Environments

To ensure we are following the advice given, the layouts of our classrooms will be required to change in order to reduce the risk of pupils transferring/catching Covid-19.

Tables will no longer be in groups and all pupils (where possible) will be facing forwards.

An example of how the classrooms will look in September (for years 2 to 6) can be found below. Please share this image with your children to help prepare them for their return. For Y1, tables are larger and hexagonal shaped, with clear dividers (similar to those seen in the picture below). Reception / Nursery children will be kept safely distanced in all of their activities.



Please note- All pupils will be given their own bag of resources to use so they do not share. Please do not spend money on pencil cases over the summer as these will not be allowed at this time. We have everything the children will need.



Bubbles

The guidelines advise that primary aged pupils can be taught in bubbles of 30, and where necessary this can be extended to year group bubbles.

Francis Askew will primarily be sticking to bubbles of 30 but as the guidelines state, in order for us to fully open, there will be times where classes within the same year group will come into contact with one another. Examples of where this will occur is; Breakfast club (see further information), lunchtimes and interventions.

Please note- where classes in year groups are needed to be mixed, social distancing will be implemented to reduce risk.

Lunch Times

To facilitate a safe environment and to ensure that pupils are remaining in their class bubbles where possible, children will eat their lunches within the classroom environment.

This is to ensure that we are adhering to the safety guidance for the reopening of the school.

Pupils will be supervised at all times and also be given the opportunity to play outside. Lunchtimes will be staggered across the school to ensure year groups and classes (where possible) are not mixing outside and when using the toilets.

Example staggered timetable

Year Group	Lunch	Playtime
Reception	11:30am	12-12.30pm (EYFS Outdoor area)
Year 1	11.45am	12.15pm-12.45pm (KS1 Playarea/Field)
Year 2	11.45am	12.15pm-12.45pm (KS1 Playarea/Field)
Year 3	12:00pm	12.30pm-1.00pm (KS2 Small Playground/Field)
Year 4	12.00pm	12.30pm-1.00pm (KS2 Playground/Field)
Year 5	12:15pm	12.45pm-1.15pm (KS2 Playground/Field)
Year 6	12.15pm	12.45pm-1.15pm (KS2 Playground/Field)

Lunch Offer

In light of the DFE guidance published in July 2020, all primary schools are planning to organise pupils in bubbles, either in class sizes or in year groups. As much as possible, pupils should not mix with pupils from other bubbles.

Therefore, an alternative approach will be to allow pupils to eat in their classrooms.

This will ensure that bubbles are not broken.

Will a hot meal be offered?

It will be possible to provide a hot meal option and a packed lunch option for all pupils. The hot meals can be delivered in aeroplane style trays with environmentally friendly disposable cutlery. An example of this can be seen on the next slide.

Menu options would be limited each day: Eg:

1 hot meat option

1 hot vegetarian option

Ham or Cheese choice of sandwich bag option.

Pupils will need to order their options in advance so that kitchens can prepare the orders.

Traditional school puddings eg: sponge and custard will be temporarily removed from school menus. These will be replaced with fruit bags, yogurts and jelly.

IMPORTANT- During the first three days back (Wednesday 9th - Friday 11th) there will be no hot meals available. Children who require a school meal will be given a choice of sandwiches only.

Examples of how hot meals will be served



Individual lidded food tray.
The meal can be provided and eaten from the tray. Trays are designed to maintain the required temperature for hot food and have 3 sections to keep items separate.

Individual lidded container – this would be used to serve meals such as pasta where all ingredients are together. This is biodegradable and can be disposed of along with food waste.



Bamboo cutlery. These are biodegradable and can be disposed of along with food waste.
Each classroom will have its own supply of bamboo cutlery as well as biodegradable napkins, disposable cloths, sanitiser spray etc.



Breakfast Club

At Francis Askew, we appreciate many of our parents are working parents who require the support of the school's breakfast club. Our club provides support for pupils from reception through to year 6 in the dining hall.

The guidance for September states that at primary school, where possible, we should be keeping the children within their class bubbles of 30. This can be extended to year group bubbles in needed.

To enable breakfast club to open safely, as a school this means we will need to create several different spaces within the school to enable for this to run safely.

I am sure you will all understand that our priority at this time is to welcome all the pupils back in September, in a safe and controlled way. Our initial phase is to focus on all year groups returning.

For the reasons stated above, we will not be opening our breakfast club for the first week back (Wednesday 9th September-Friday 11th September).

We are hoping to open again on **Monday 14th September.**

In the first week back, we will ask all parents to express an interest in a place. Then from those numbers we will do our very best to accommodate all pupils, once we have facilitated the safe return of pupils.

After School Clubs

We are incredibly proud of our Extra Curricular offer and fully intend to get this back up and running and on offer to all of our pupils as soon as we can.

Due to the guidance in place, it will not be possible to offer extra curricular activities when we first return in September, but the staff will begin to phase the clubs back in with the aim of getting our extensive extra curriculum offer back in place as quickly as possible.



A background image of a sunflower field under a clear blue sky. The sunflowers are in various stages of bloom, with bright yellow petals and dark brown centers. The image is slightly faded to allow text to be read clearly.

SEND Provision

During the first week back, Mrs Hornby (Acting SENCO) will contact all parents to discuss individual provision for those children with Special Educational Needs.

Transition booklets are in the process of being made for key children and you will be able to share this with your child before they return in September.

Any visuals, social stories or other communication needs that your child may require can be discussed with Mrs Hornby prior to your child returning.

TRACK and TRACE

All schools are required to actively engage in the 'Track an Trace' system.

Pupils, staff and other adults will not be permitted to come into the school if they have [coronavirus \(COVID-19\) symptoms](#), or have tested positive in the last 7 days.

If anyone in the school becomes unwell with a new, continuous cough or a high temperature, or has a loss of, or change in, their normal sense of taste or smell (anosmia), they will be sent home and advised to follow '[stay at home: guidance for households with possible or confirmed coronavirus \(COVID-19\) infection](#)', which sets out that they must self-isolate for at least 7 days and should [arrange to have a test](#) to see if they have coronavirus (COVID-19). Other members of their household (including any siblings) should self-isolate for 14 days from when the symptomatic person first had symptoms.

What will we do if a member of the school community tests positive?

All parents/staff and visitors to the school are required to inform the school if they or their family members have had a positive test for Covid-19.



The school will contact the local health protection team.



The health protection team will carry out a rapid risk assessment to confirm who has been in close contact with the person during the period that they were infectious, and ensure they are asked to self-isolate.



Household members of those contacts who are sent home do not need to self-isolate themselves unless the child, young person or staff member who is self-isolating subsequently develops symptoms. If someone in a class or group that has been asked to self-isolate develops symptoms themselves within their 14-day isolation period they should follow '[stay at home: guidance for households with possible or confirmed coronavirus \(COVID-19\) infection](#)'. They should get a test, and:

- if the test delivers a negative result, they must remain in isolation for the remainder of the 14-day isolation period. This is because they could still develop the coronavirus (COVID-19) within the remaining days.
- **if the test result is positive, they should inform their setting immediately, and must isolate for at least 7 days from the onset of their symptoms**

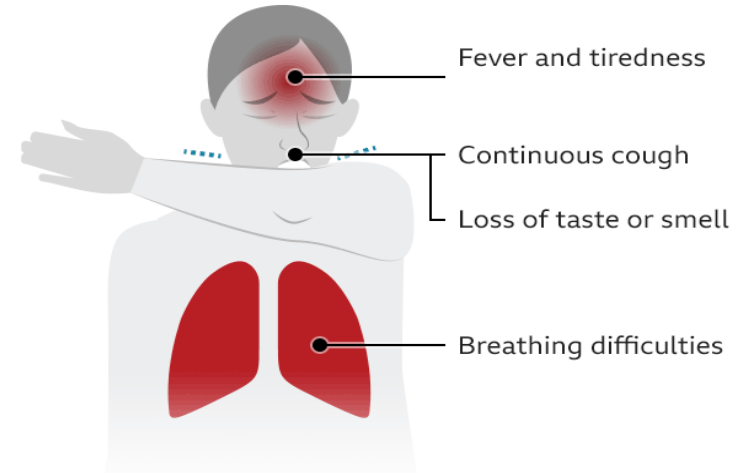


The health protection team will work with schools in this situation to guide them through the actions they need to take. Based on the advice from the health protection team, schools must send home those people who have been in close contact with the person who has tested positive, advising them to self-isolate for 14 days since they were last in close contact with that person when they were infectious

Checking for symptoms of Covid-19

- Temperature checks will not be taken on arrival by the school but we recommend parents do this daily as an extra precaution.
- **Do not risk the lives of our pupils and staff by administering Calpol before bringing your child to school to bring down a temperature.**
- Any child or adult showing symptoms-there is an isolation area in school. Parents will be called immediately and parents will be required to immediately collect their child.

Coronavirus: Key symptoms



Source: NHS

BBC

National Guidance [here](#)

Public Health England Advice

PPE-Personal Protective Equipment

Wearing a face covering or face mask in schools or other education settings is **not recommended**.

PPE is only needed if children need intimate care, young people and students whose care routinely already involves the use of PPE due to their intimate care or if a child, young person or other learner becomes unwell with symptoms of coronavirus.

Social Distancing

We know that, unlike older children and adults, Early Years and Primary age children **cannot be expected to remain 1+ metres apart from each other and staff**. Schools should therefore work through the hierarchy of measures set out below:

- avoiding contact with anyone with symptoms
- frequent hand cleaning and good respiratory hygiene practices
- regular cleaning of settings
- minimising contact and mixing

Where settings can keep children 2m away-they should do so.

Key Information

In schools, preventing the spread of coronavirus involves dealing with direct transmission (for instance, when in close contact with those sneezing and coughing) and indirect transmission (via touching contaminated surfaces). These include:

- Minimising contact with individuals who are unwell by ensuring that those who have coronavirus symptoms, or who have someone in their household who does, do not attend childcare settings, schools or colleges
- cleaning hands more often than usual
- wash hands thoroughly for 20 seconds with running water and soap and dry them thoroughly or use alcohol hand rub or sanitiser ensuring that all parts of the hands are covered
- ensuring good respiratory hygiene by promoting the 'catch it, bin it, kill it' approach
- cleaning frequently touched surfaces often using standard products, such as detergents and bleach
- minimising contact and mixing by altering, as much as possible, the environment (such as classroom layout) and timetables (such as staggered break times).



Public Health
England

National Guidance [here](#)

Hygiene Measures

- The School will be thoroughly cleaned throughout the day, including toilets.
- Regular hand washing timetabled for all classrooms.
- [Catch It/Bin It/Kill It.](#)
- Handwashing will be communicated and timetabled regularly in school. Most classrooms are fitted with sinks and communal areas are fitted with a sink, soap and hand sanitizers.
- Tissues will be available in all classrooms in order to [Catch It/Bin It/Kill It.](#)
- Common areas and equipment will be cleaned down at regular intervals during the day with antibacterial sprays and wipes.
- Equipment will be given to all pupils.
- Children will be provided with disposable cups to drink from each day. Bottled water will be provided at lunch.

CATCH IT

Germs spread easily. Always carry tissues and use them to catch your cough or sneeze.



BIN IT

Germs can live for several hours on tissues. Dispose of your tissue as soon as possible.



KILL IT

Hands can transfer germs to every surface you touch. Clean your hands as soon as possible.

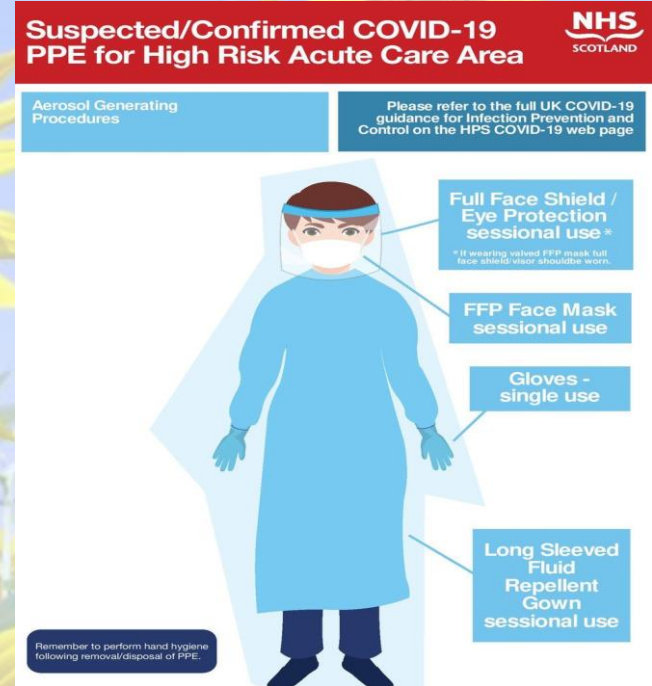


NHS

Personal Protective Equipment

- PPE will be provided to staff when dealing with pupils who have intimate care needs and any pupils displaying symptoms.
- This will also be available for staff that request it who feel vulnerable.
- It is down to staff and pupil's personal choice to wear PPE.
- School will not provide PPE for pupils as it is against Public Health's advice, however if they wish to bring their own, that is their choice.
- There will be a dedicated room within the school for CoVid19 with PPE stock and facilities for any staff member or child displaying symptoms.
- Any pupil displaying symptoms will be taken to this room and parents will be called to immediately collect. A call will then be made to all other children's parents within that bubble to inform them.

National Guidance [here](#)



Staggered Start Times/Pick Up Times

Please see below the staggered start/finish times for each year group.

Social distancing must be strictly adhered to and it is the responsibility of the parent to ensure this is carried out. Due to the large number of adults on site, we will only be able to allow one parent to accompany their child/children.

Year group	Arrival time	Leaving time
Nursery	8:45 am	11:45 am
EYFS	8:55 am	3:00 pm
Year 1 and 2	8:55 am	3:00 pm
Year 3 and 4	8:50 am	3:05 pm
Year 5 and 6	8:45 am	3:10 pm

Please note: If you have children in different year groups, you should drop all siblings off at the earliest required time (the siblings will be directed to their lining up spot on the playground to wait for their teacher). At the end of the day, please arrive at the latest required time and other siblings will be held back with their teacher until their sibling in the later bubble leaves.

Drop Off and Pick Up Arrangements

Only 1 parent allowed on school site with their child. Please social distance responsibly and avoid doubling back on yourself when using the one way system in place.

Classes will be collected from the playground by their teachers in a morning. There will be signs around the playground so that your children know where to stand (years 1 to 6 follow red arrows on picture).

Reception and Nursery parents can enter directly through the first blue gates (near the yellow doors) rather than walk round the site (see blue arrow) and drop children at their class gate with their teacher.

Children will be brought out to the playgrounds for collection at home time.

