

Returning to School - Plans and Advice for Parents of children in the F2/Year 1/Year 6 and Vulnerable and Critical Workers group

Throughout the past two weeks, schools have received guidance from the Government and we wanted to write to you to update you on our plans for a Safe Return to School for your children and our staff. The initial date proposed for the reopening was the 1st June. However, our Trust have made the decision to postpone the reopening of the Reception (F2), Year 1 and Year 6.

The reopening of the school to these specific year groups will now begin the week commencing 8th June. This decision is for the safety of staff and pupils.

Thank you for all your emails and phone calls since the announcement - it is wonderful to receive your encouragement and support. We want to make this a positive and caring experience for all our children, looking after them to ensure they feel safe and settled as we ease them back into school life. The information shared is fully transparent and it is down to you, as parents, to make a decision that is right for your child and family.



National Guidance for parents [here](#)

Public Health England Advice

PPE-Personal Protective Equipment

Wearing a face covering or face mask in schools or other education settings is **not recommended**.

PPE is only needed if children need intimate care, young people and students whose care routinely already involves the use of PPE due to their intimate care or if a child, young person or other learner becomes unwell with symptoms of coronavirus.

Social Distancing

We know that, unlike older children and adults, Early Years and Primary age children **cannot be expected to remain 2 metres apart from each other and staff**. In deciding to bring more children back to Early Years and schools, we are taking this into account. Schools should therefore work through the hierarchy of measures set out below:

- avoiding contact with anyone with symptoms
- frequent hand cleaning and good respiratory hygiene practices
- regular cleaning of settings
- minimising contact and mixing

Where settings can keep children 2m away-they should do so (Year 6).

Key Information

In schools, preventing the spread of coronavirus involves dealing with direct transmission (for instance, when in close contact with those sneezing and coughing) and indirect transmission (via touching contaminated surfaces). These include:

- Minimising contact with individuals who are unwell by ensuring that those who have coronavirus symptoms, or who have someone in their household who does, do not attend childcare settings, schools or colleges
- cleaning hands more often than usual
- wash hands thoroughly for 20 seconds with running water and soap and dry them thoroughly or use alcohol hand rub or sanitiser ensuring that all parts of the hands are covered
- ensuring good respiratory hygiene by promoting the 'catch it, bin it, kill it' approach
- cleaning frequently touched surfaces often using standard products, such as detergents and bleach
- minimising contact and mixing by altering, as much as possible, the environment (such as classroom layout) and timetables (such as staggered break times).



Public Health
England

National Guidance [here](#)

What will this look like at our school?

- The school will reopen to **F2 only** on **Monday 8th June**. Y1 will be invited to return on **Tuesday 9th June**. Y6 will be invited to return on **Wednesday 10th June**. Critical worker / vulnerable children will continue to attend as normal.
- There will be no breakfast club from 8th June 2020. This is because we are not able to ensure social distancing with such large numbers returning.
- The pupils will be organised into 'bubbles' of no more than 13 children (up to 3 bubbles each for Y6/Y1/EYFS and 3 for vulnerable and critical workers).
- Year groups will have staggered start times, finish times and lunch times.
- Children will be provided with disposable cups for drinks.
- Each year group will have their own directed route to enter the school with 2m demarcations for social distancing.
- Each 'bubble' will have its own designated outdoor area for breaks.
- There will be 2 members of staff in each bubble and these staff members will remain with that 'bubble' throughout the day, each day.
- Lunch will be served inside each 'bubble's' classroom. Children in Reception and Y1 will be provided with a free packed lunch under the universal free school meal programme, Y6 and critical worker/vulnerable pupils in KS2 may wish to bring their own packed lunch in a wipeable container. If your child is entitled to a free school meal then they will be provided with a packed lunch. Children will be provided with bottled water at lunchtime.
- Toilets will be assigned to each bubble in Reception and Y1. In KS2, we will ensure cleaners are on site throughout the day to provide regular cleaning of shared toilets. Children will be supervised when at the toilets to ensure limited contact is made.
- **The school will operate for 4.5 days, Monday to Friday morning**. This will allow for a deep clean to take place in all rooms on Friday afternoon. On Fridays, children will have their lunch before the leave for the day.

Continued.....

- **Any parents not adhering to the social distancing measures in place by the school will not be granted a place.**
- **Any child who deliberately refuses to follow social distancing measures will be sent home immediately and may lose their place.**
- Only one parent allowed on site for drop off and pick up.
- Start times and pick up times must be strictly adhered to.
- Public Health advise against staff and pupils wearing gloves or face masks.
- If parents wish to speak to staff members from within the bubble, the school office must be contacted via telephone and a phone call will be arranged immediately. If information is urgent, please call before the start of the school day.
- Please ensure children attend school wearing long lasting sun cream and bring a sun hat.
- Book bags are not to be brought to school, the only item allowed to be brought in is a packed lunch box for KS2.
- Children in 'bubbles' must attend every day unless they are ill.



Hygiene Measures

- School will be closed each Friday afternoon in order to clean down the school thoroughly ready for the following week especially for our younger 'bubbles'.
- All KS2 children will use hand sanitiser upon entering the building.
- Handwashing will be communicated and timetabled regularly in school. All classrooms are fitted with sinks and communal areas are fitted with a sink, soap or hand sanitizers.
- Tissues will be available in all classrooms in order to [Catch It/Bin It/Kill It.](#)
- Common areas and equipment will be cleaned down at regular intervals during the day with antibacterial sprays and wipes.
- Equipment will be restricted in Reception and Year 1.
- All pupils will have their own classroom equipment, including exercise books for older children which will be kept in their own basket under their desks.
- Teachers will not be taking home any books to mark and all books will remain in the child's personal basket. This is to avoid cross contamination.
- Children will be provided with disposable cups to drink from each day. Bottled water will be provided at lunch.

CATCH IT

Germs spread easily. Always carry tissues and use them to catch your cough or sneeze.



BIN IT

Germs can live for several hours on tissues. Dispose of your tissue as soon as possible.



KILL IT

Hands can transfer germs to every surface you touch. Clean your hands as soon as possible.



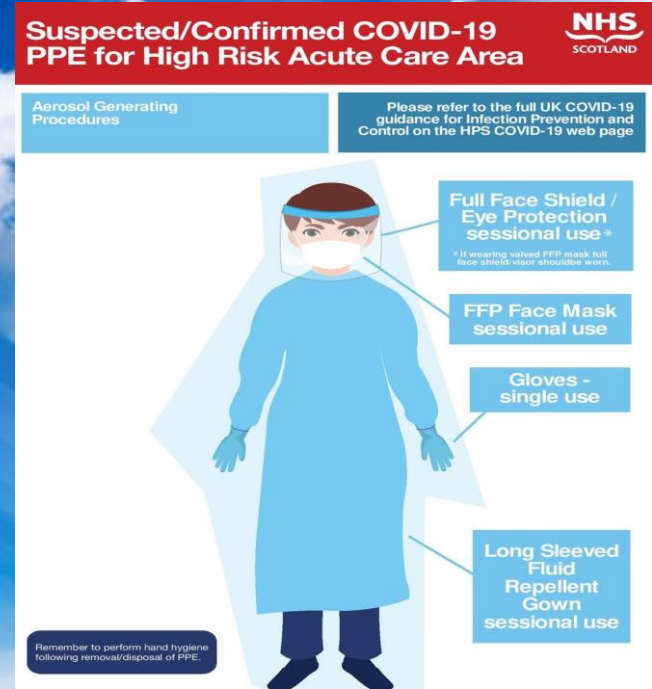
NHS

Handwashing Guidance [here](#)

Personal Protective Equipment

- PPE will be provided to staff when dealing with pupils who have intimate care needs and any pupils displaying symptoms.
- This will also be available for staff that request it who feel vulnerable.
- It is down to staff and pupil's personal choice to wear PPE.
- School will not provide PPE for pupils as it is against Public Health's advice, however if they wish to bring their own, that is their choice.
- There will be a dedicated room within the school for CoVid19 with PPE stock and facilities for any staff member or child displaying symptoms.
- Any pupil displaying symptoms will be taken to this room and parents will be called to immediately collect. A call will then be made to all other children's parents within that bubble to inform them.

National Guidance [here](#)

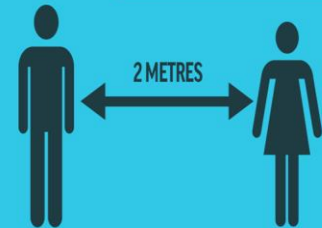


Social Distancing

- Staggered starts times/finish times/lunch breaks.
- Children organised into 'bubbles' and will stay in these all day with the same two members of staff.
- Playground/entry 2m distancing with signage.
- Designated play areas for each 'bubble' during a staggered break/lunch rota.
- Foundation children will play in their normal outdoor area on a rota system. Large play equipment will not be used.
- Designated drop off areas for children in different year groups
- 13 pupils maximum in each class 'bubble' with 2m distancing in Y6.
- 2m distancing will be encouraged in Reception/Year 1 whenever the group in the bubble are together-eg story time, class discussions etc. In line with Government guidelines, we cannot keep the younger children apart but will do our very best to encourage this.
- Minimal access to the staff room and social distancing adhered to by all staff members.
- No external member of staff will be allowed on site, including Advotalk, speech therapists and Sports Coaches. All teacher release time will be covered by the second member of staff linked to the bubble.

 HM Government

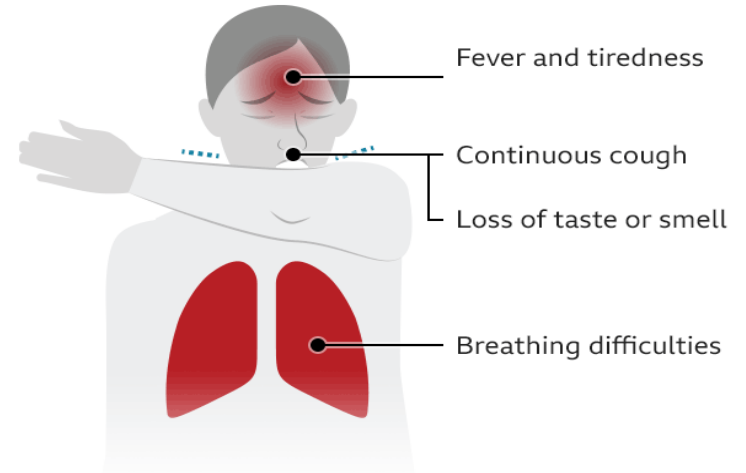
**YOU NEED TO STAY 2 METRES
APART TO **SAVE LIVES NOW****



Checking/Testing of staff and pupils for symptoms

- Temperature checks will not be taken on arrival by the school but we recommend parents do this daily as an extra precaution.
- Do not risk the lives of our pupils and staff by administering Calpol before bringing your child to school to bring down a temperature.
- Any child or adult showing symptoms-there is an isolation area in school. Parents will be called immediately.
- Any child/adult with symptoms will be recommended a test and the appropriate advice followed-ie self isolation. This will be 7 days.
- If a confirmed case - all adults and pupils in this 'bubble' will be tested immediately and recommendations followed including self isolation.

Coronavirus: Key symptoms



Source: NHS

BBC

National Guidance [here](#)

Pupil Wellbeing



In School:

- On return, the school is creating a wellbeing focus to its curriculum in order to prepare students for social distancing, hygiene and their experiences in lockdown.
- Designated members of the Emotional Well-being Team will be helping to provide resources and strategies to support children as they return to school.
- We will continue sharing work and successes via Twitter.

Virtual Learners:

- Designated members of staff will continue providing home learning activities for all year groups. These will continue to be accessed via various online programmes e.g. Tapestry, Lexia, TT Rockstars.
- Online learning through a programme called TEAMS will be available soon for all of our KS2 children working from home. More information to follow.
- Online safety [activities and advice](#).
- From the 8th June, there will not be the capacity to continue to call all parents. Please contact the school if you have any issues.
- Regular contact for vulnerable pupils and an unconditional school place - the school has added capacity for these pupils to join us.

The following pages will outline individual year group arrangements. We are trying to keep everyone informed to ensure complete transparency.

However, please be aware that these plans may change at anytime due to government guidance or unforeseen circumstances.

We appreciate your understanding.



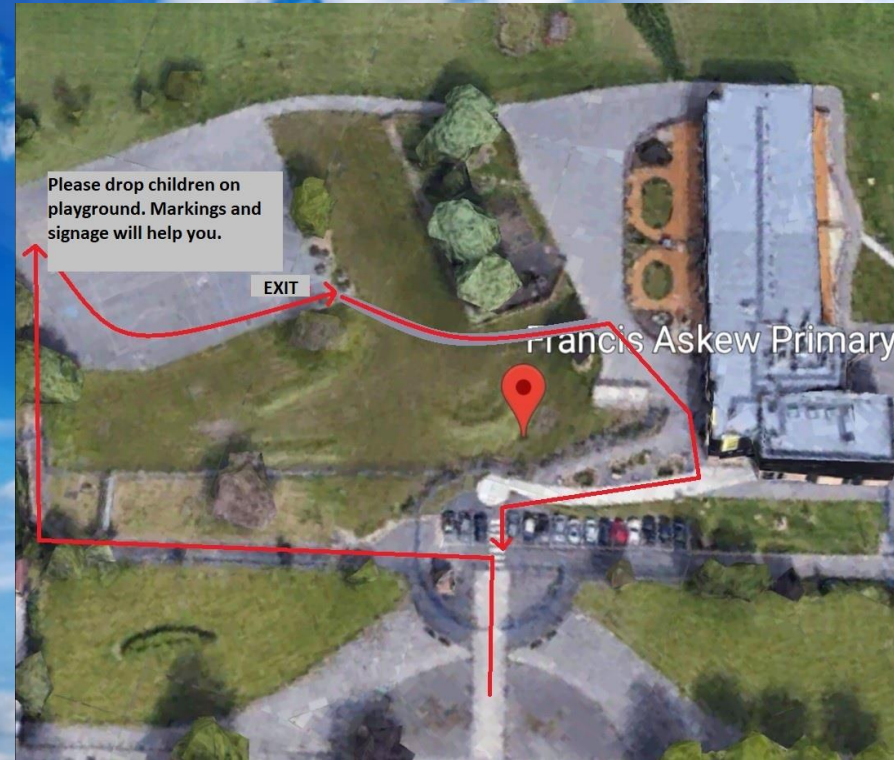
Drop Off and Pick Up Arrangements Reception

Return Date	Monday 8th June
Start Time	9:15am
Home Time	2:40pm (12pm on Fridays)
Staffing	Mrs Leach, Mrs Barmby, Miss Gardiner, Mrs Cloughton, Miss Daddy, Mrs Rispin Mrs Enwright/Mrs Gibbons, Miss Bateman

If children display any symptoms throughout the day they must be collected immediately.

**Bubbles will be collected from the playground by their teachers in a morning.
Children will be brought out to the playground for collection at home time.**

Only 1 parent allowed on school site with their child.



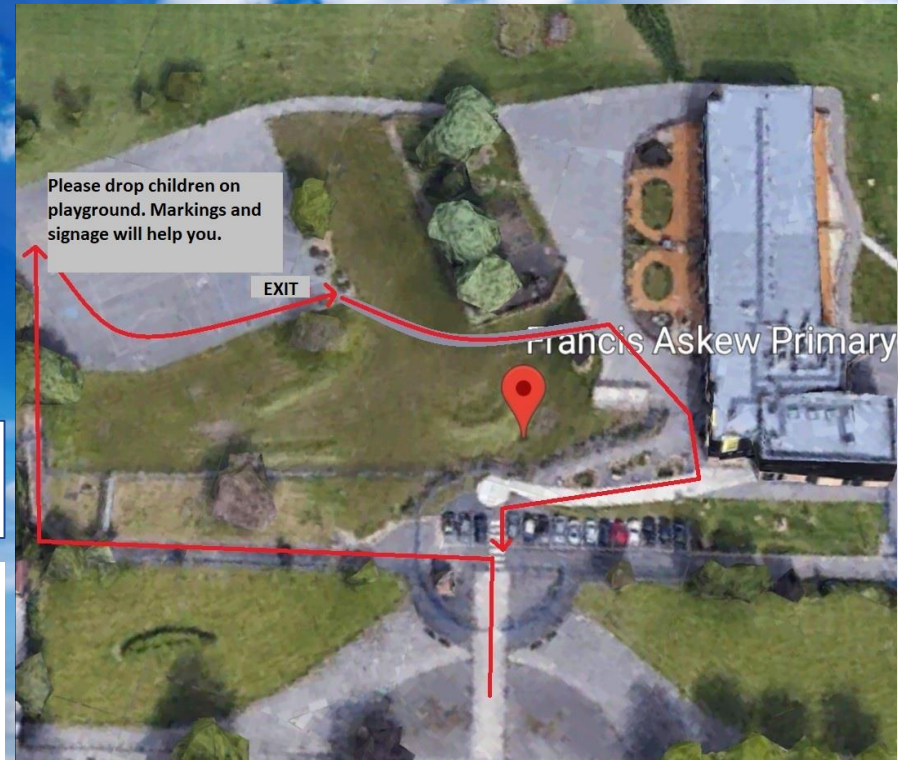
Drop Off and Pick Up Arrangements Year 1

Return Date	Tuesday 9th June
Start Time	9 am
Home Time	2:55pm (12:15pm on Fridays)
Staffing	Mrs Windass, Mrs Rookyard, Mrs Dales, Mrs Smith, Mrs Shakespeare, Mr Jackson.

If children display any symptoms throughout the day they must be collected immediately.

**Bubbles will be collected from the playground by their teachers in a morning.
Children will be brought out to the playground for collection at home time.**

Only 1 parent allowed on school site with their child.



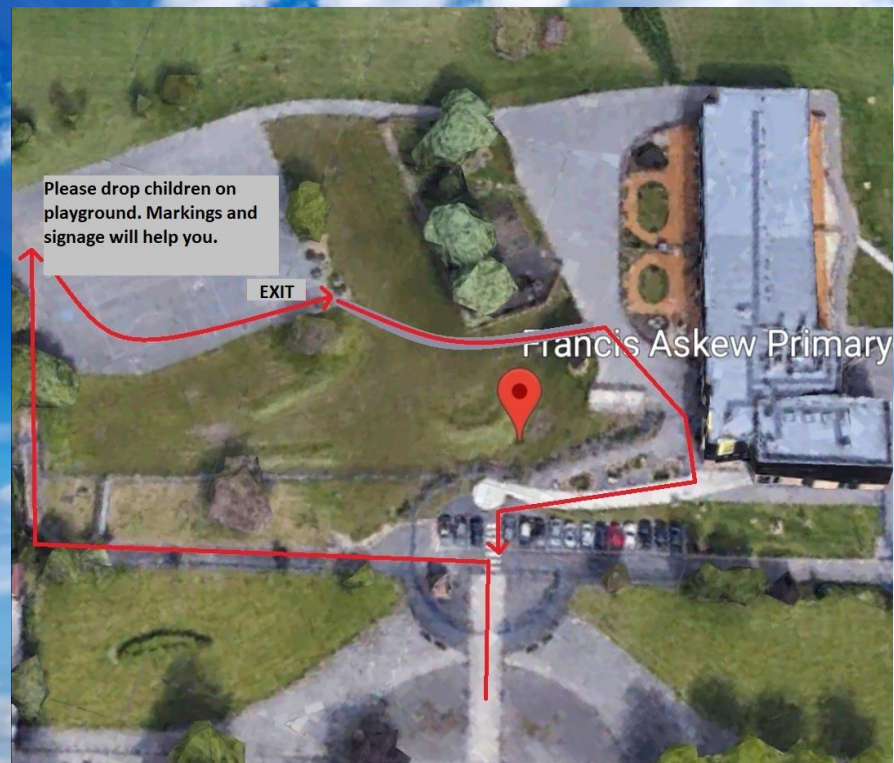
Drop Off and Pick Up Arrangements Year 6

Return Date	Wednesday 10th June
Start Time	8.45 am
Home Time	3.10pm (12:45pm on Fridays)
Staffing	Miss Kingston, Mrs Pougher, Mrs Overfield, Mr Williams, Mr Wells, Mrs Harrison

Bubbles will be collected from the playground by their teachers in a morning. Children will be brought out to the playground for collection at home time.

If your child comes to school alone, they will not be allowed onto the school site before the start time above. They will also be let out of the building alone from the hall doors at home time.

Only 1 parent allowed on school site with their child.



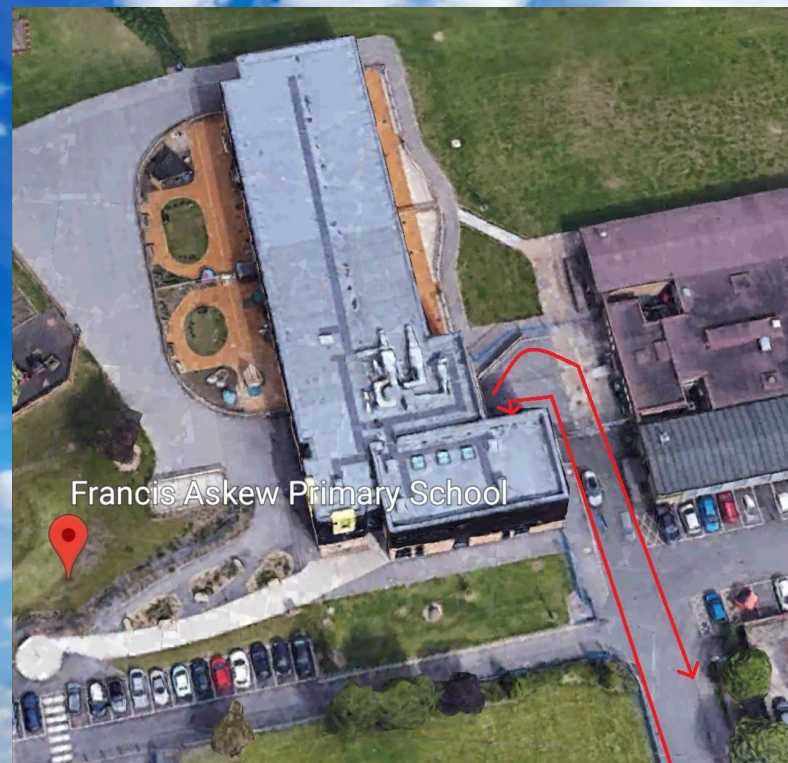
Drop Off and Pick Up Arrangements Critical Worker / Vulnerable children

Start Time	8:30 am
Home Time	3 pm 12:15pm for KS1 on Fridays 12:45pm for KS2 on Fridays
Staffing	Miss Laybourne, Mr Steele, Miss Vincent, Miss Gilling, Mr Smith, Mr Finnerty, Mrs Davidson.

Children in this group who are F2, Y1 or Y6 will be placed into one of those year group bubbles. Please make note of the drop off/pick up point and start / pick up times for these year groups on the previous pages. If you have different children in different groups, please drop off your child in this Critical Worker / Vulnerable group first and then walk around the building to the playground drop off.

Bubbles will be collected from the hall by their teachers in a morning. Parents should collect children from the same hall doors at home time.

Only 1 parent allowed on school site with their child.



Our Virtual School Offer from 8th June

As you have seen, the vast majority of our staff will all be in school teaching within bubbles.

We will continue to provide online learning for all year groups. The staff leading this will be as follows. Please contact these staff members from 8th June if you are struggling or would like to share work, as class teachers will not have the capacity to continue with this support.



KS1

Mrs Sutton
Miss Hanson
Miss Nichols

ksutton@francisaskewprimary.org
ehanson@francisaskewprimary.org
jnichols@francisaskewprimary.org

KS2

Mrs Kennerley
Mrs Donnelly
Mrs Martin

lkennerley@francisaskewprimary.org
jdonnelly@francisaskewprimary.org
lmartin@francisaskewprimary.org

SEND support

Mrs Hornby

mhornby@francisaskewprimary.org